

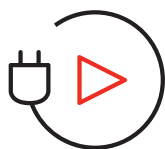
# ECDIS NX Compact.



# Intuitive and future-proof **ECDIS**.

The ECDIS NX Compact is a new electronic chart display and information system, especially designed for the use in refits, supporting customers with unsurpassed user-friendliness and easy handling at a competitive price.

## Key Benefits



### Simplified installation

Reliability right from the start, and reduced cost and efforts.

- "Plug & play": total installation time about 1 hour with prepared sensor cables
- Application installation and update is done via USB, supported through Wizard
- Four standard configurations prepared and selectable during installation
- Hardware installation and cabling follows standard procedures



### Easy familiarization for crews

Intuitive to operate thanks to a modern, clear structured UI.

- First „user-defined“ ECDIS application, designed under continuous feedback from navigators
- Multi-touch and intuitive interaction patterns like point-to-chart, drag and drop or retractable panels
- Quick access bar and wizard guided workflows for standard use cases
- Embedded online user manual and free online type-specific ECDIS training

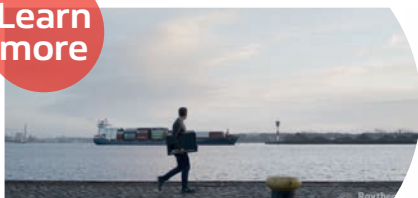


### Secure and future-proof investment

Ready for future: modular features and compliance with standards.

- Future-proof hardware and operating system
- Ongoing IMO compliance (e.g. new ECDIS test standards, such as S-100)
- Growing scope of modular features, easy to update
- Global service network in case you need help

Learn more

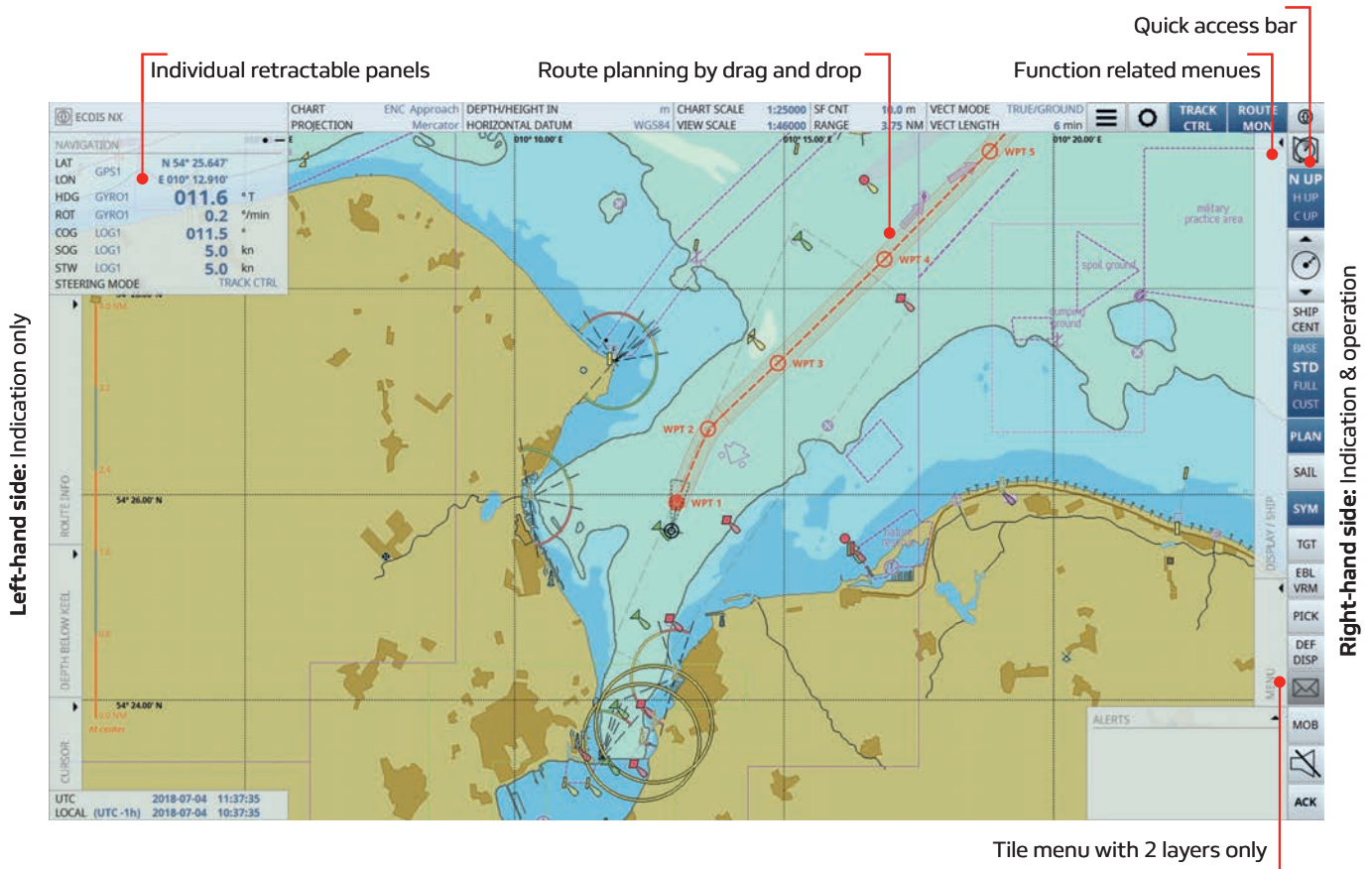


ECDIS NX is the first user-defined ECDIS in the market.

Visit the website and experience the modern user interface and intuitive functions.

[www.anschuetz.com/ecdis-nx-compact](http://www.anschuetz.com/ecdis-nx-compact)





## Main Features

### Better situational awareness, less workload, ongoing compliance.

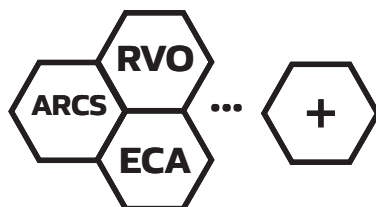
- Smart tools for voyage management, such as Wizard based route planning
- ETA calculation and speed of advance (SAO) for individual waypoints in UTC or local time
- Graphical editing of routes, supported through intuitive interaction patterns (e.g. drag'n drop)
- Editable look ahead zones for anti-collision, route monitoring and anti-grounding
- Filtering tools to reduce unnecessary alarms
- Support of Admiralty Information Overlay (AIO)
- Chart formats / availability: S-57/S-63 ENCs (other formats as an option)
- Type approved acc. to IEC 61174 Ed. 4.0 and IHO Presentation Library S-52 Annex A Edition 4.0 incl. DNV GL certificates

- Dual ECDIS NX configuration:



- Compliant for Paperless Navigation
- Type approved as Track Control System acc. to IEC 62065 Ed. 2 with Anschutz NP5400 / NP5500 autopilots
- Central chart and route management

## Plus Features

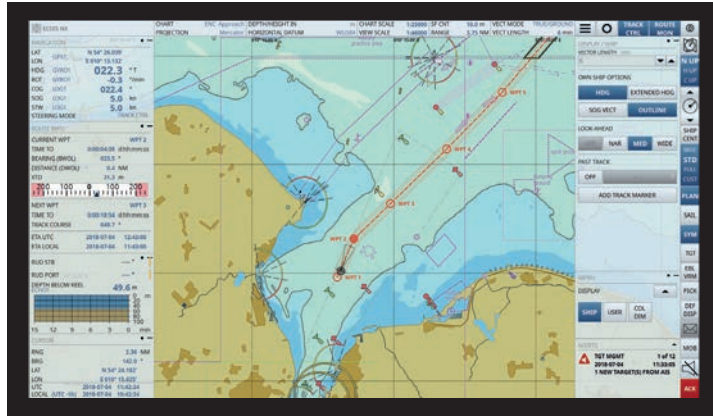


- ARCS charts (optional)
- Radar video overlay (optional)
- Emission control areas (ECA)

# Technical Data

- 24" Panel PC with multi-touch (incl. zoom)
- i7 Quad Core processor, 240 GB SSD, 8 GB RAM
- Display resolution 1920x1080 (16/9)
- 8 x IEC 61162-1 serial phoenix connectors (NMEA)
- USB thumb drive with application installation wizard
- IEC 61174 Ed. 4 type approved ECDIS NX application (Synopsis Ed. 5.xx)
- Ergonomic laser desktop trackball with scroll wheel, IP 68
- Mechanical connection kit for EMV-compliant cable strutting
- Identical cut out and table mount bracket as ECDIS24

## 24" Touch Panel-PC with ECDIS NX



VDR -  
Primary/Backup ECDIS -

2x LAN

115 & 230 VAC  
24 VDC

8x IEC 61162-1  
RS422 (NMEA)

Trackball USB  
Chart Updates USB

Pre-configured  
sensor inputs

- GPS 1
- GPS 2
- Gyro
- Log
- Echosounder
- BAM
- BNWAS
- AIS

In case of a legacy Raytheon Anschütz ECDIS 24 installation, the magicplex can still be used and easily connected via LAN to the new panel-pc.

